

# RIZE 130

## ALL MOUNTAIN:

New frame technology with 130mm of optimized suspension to provide a bike that truly brings the FUN back to mountain biking.

## SYSTEM INTEGRATION:

2,115g Rize Carbon Frame\*  
1,315g Lefty Carbon PBR  
655g Hollowgram SL crankset 3x9  
250g HeadShok SI Headset/Stem:  
225g Fox Float RP23  
116g Lefty Si Hub  
60g HeadShok SI Headset

4,736g Total

Lightest 'System' Weight in its class

\*Size large, painted with derailleur hanger



## FRONT TRIANGLE:

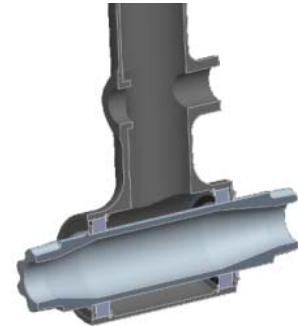
- Monocoque moulded high modulus uni-directional carbon lay-up
- Top tube optimised for lateral stiffness, providing excellent tracking and control.
- Organically shaped down tube profiling with optimized carbon lay-up for superior front end lateral stiffness.
- Oversized towards bottom bracket to give explosive power transfer, torsional rigidity and pedaling efficiency.
- SystemSix carbon fiber co-molding technology. Monocoque front section co-molded to aluminum "BackBone".
- Aluminium version features hydroformed front triangle strategically placing material exactly where needed with no added weight.
- 68.5 degree head tube angle for all-day, all-mountain riding.

## BACKBONE TECHNOLOGY

- Industry first 3D forged "BackBone" combines BB30 Si bottom bracket, lower pivot, and double-butted seat tube into a three dimensionally forged part.
- Stronger and stiffer than three separately welded pieces.
- 3D forging process properly aligns grain structure for longer fatigue life.
- One structure assures proper alignment between bottom bracket and pivots.

## DOUBLY INTEGRATED BOTTOM BRACKET

- Integration 1: Bottom bracket shell integrated to form one piece "BackBone".
- Integration 2: BB30 Si bottom bracket shell reduces weight and increases stiffness.
- The design means the Rize resists pedal forces better than traditional designs, providing responsive power transfer and optimum efficiency.



BackBone/BB30 Technology

## COMPOSITE SEATSTAYS

- High-modulus carbon fiber with aluminum forgings.
- Maximized lateral stiffness for more control.
- Lightweight structure that withstands high-landing loads.
- Sealed cartridge bearings for reduced friction.

## ASYMMETRIC SWINGARM

- Aluminum swingarm is welded together with forgings, formed chain stays, and an oversized bridge.
- "Rectangularized" chain stays resist lateral pedaling forces for more efficiency
- Oversized bridge maximizes torsional stiffness for better control.
- Machined after welding and heat treatment guarantees precision alignment.

## SUSPENSION PERFORMANCE

- "True Travel" suspension is specifically designed for the *All Mountain* rider. Refined to achieve the optimum small bump response and stable pedaling platform while remaining active under braking to provide 130mm of fully useable travel.

## LEFTY CARBON PBR (Push Button Rebound & Lock-out)

- The lightest 130mm travel fork on the market.
- Air sprung, oil damped, with rider friendly Push Button Rebound & Lock-out controls.

## FRAME MATERIAL OPTIONS:

Available in Carbon or Aluminum front triangle.

## SIZES:

S, M, L & XL

## WARRANTY:

Handmade in the USA. Lifetime frame warranty with no rider weight limit!

WEBSITE: [www.cannondale.com](http://www.cannondale.com)



TEST RIDE REASON #25:

# STAG PARTY.

**cannondale**  
FEEL IT.